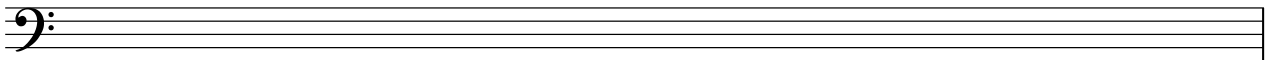


1.

- a) Write the key signature for G Minor on the staff below.
- b) Write a G Harmonic Minor scale (ascending only) in whole notes.
- c) Fill in the diatonic triads for G Harmonic Minor above the scale.  
(be sure to include any relevant accidentals from G Harmonic Minor in all members of each triad).
- d) Underneath each triad, write the appropriate Roman Numeral. Be sure to pay attention to upper and lower case numerals as well as  $\circ$  and  $+$  symbols as applicable.



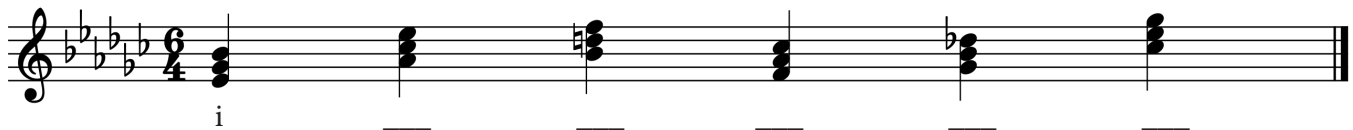
2. a) Indicate the key signature of the musical passage.

(The first triad/R.N. underneath are clues).

Key signature: \_\_\_\_\_

b) Write the appropriate Roman Numeral under each triad. The first is done for you.

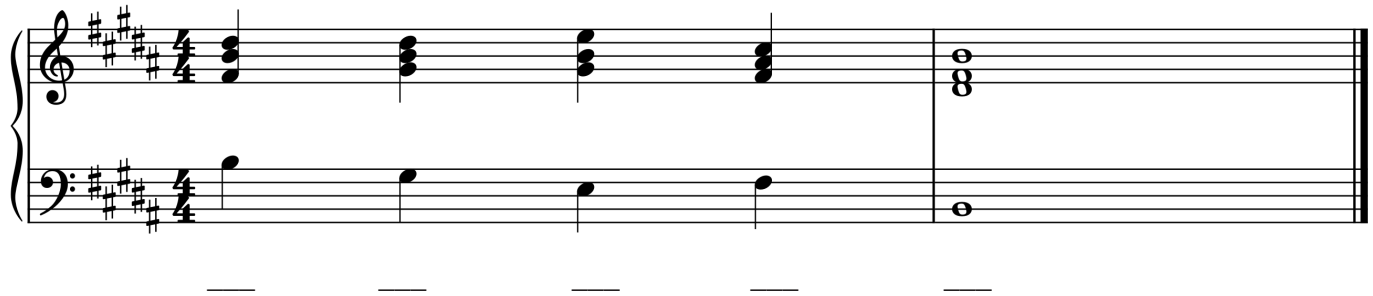
Be sure to consider both the key signature and, if applicable, accidentals when determining the triad's quality.



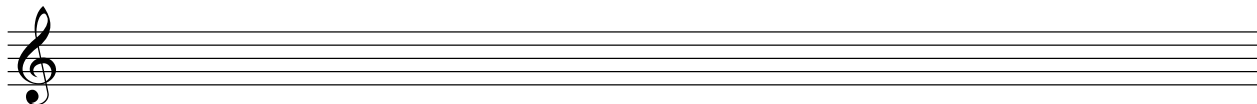
3. a) Indicate the key signature of the musical passage. Look at the first and last triads to determine if it is major or minor. Key signature: \_\_\_\_\_

b) Write the appropriate Roman Numeral under each triad. These triads are in open position.

You may wish to put them in closed position to help determine the proper R.N.



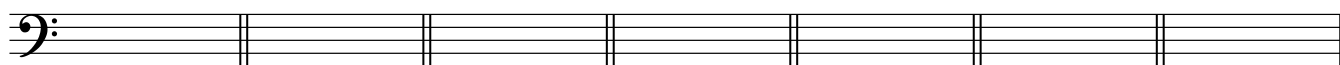
4. Compose a simple melody lasting four measures in a MAJOR key. The specific key is up to you but it must **not** be in C Major. Use a key signature and write it in 4/4 or 3/4 time. **Use your notes from Class 12/Workbook 12 as well as the Melodic Norms handout.** Your melody should adhere to these principles. You will almost certainly wish to write multiple drafts on blank manuscript paper before writing the final version below.



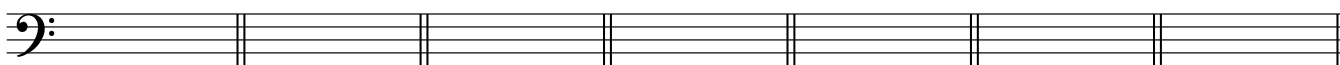
5. Continued work with Practical Test 2. Spend **at least** 90 minutes (spread over many shorter sessions) working on **Practical Test 2**. Be sure to follow the detailed instructions about how to practice. Spend a roughly equal amount of time on each of the of the 4 questions on the handout.

When you have done this, write “I did it” or similar here:

6. Write the following triads on the staff below. Pay close attention to chord quality, inversion, and clef.

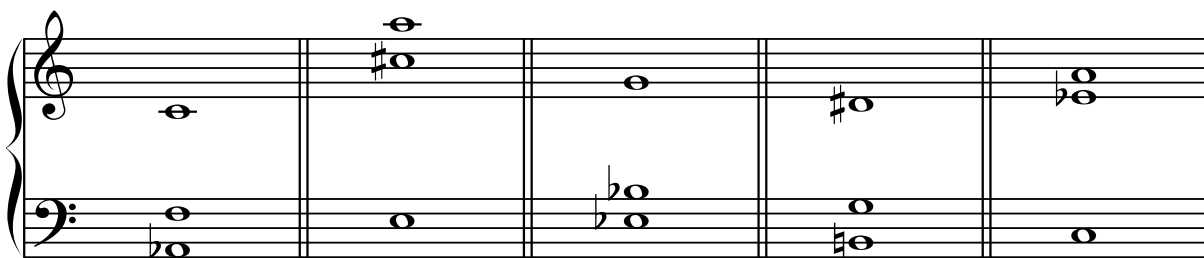


d 2nd      C# 1st      D $\flat$ + root      b $^\circ$  1st      F# 2nd      g $\flat$  1st      C+ root



G#+ root      a $^\circ$  2nd      E root      f 1st      E $\flat$  root      B $\flat$  1st      g 2nd

7. Analyze each of the given open-position triads, indicating below the staff its root, quality, and inversion. For example, a first-inversion C minor chord would be labeled “c, 1st.”



\_\_\_\_\_